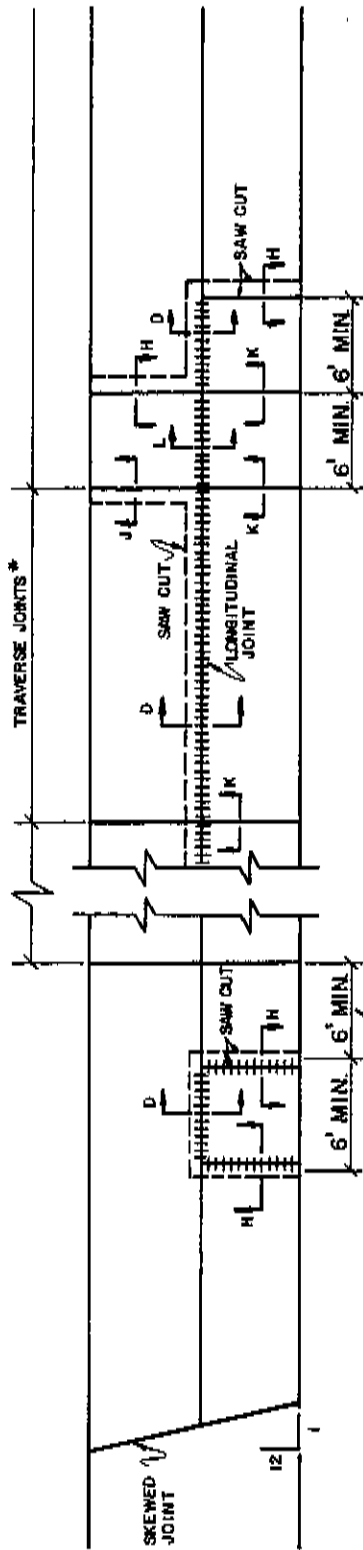


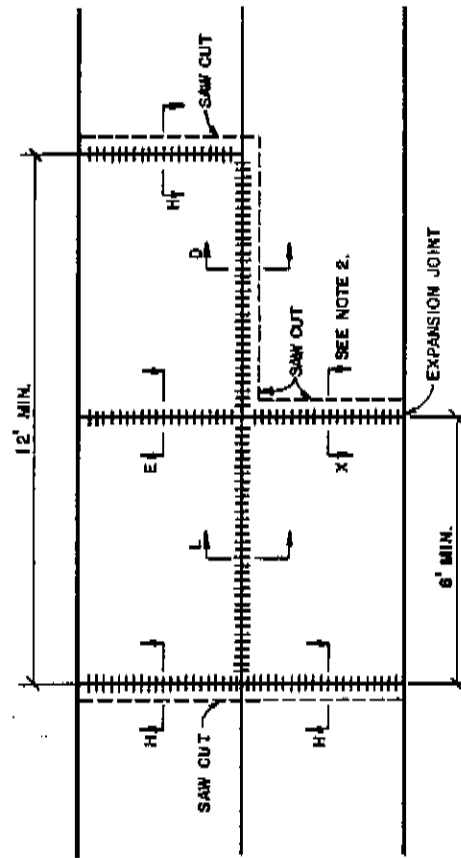
PAVEMENT JOINT DETAILS



IF A PORTION OF THE SLAB TO BE REPLACED IS CLOSER THAN 6' TO A TRAVERSE JOINT THEN THE ENTIRE SLAB UP TO THE JOINT IS TO BE REPLACED.

* REINFORCED CONCRETE PAVT. --- 40' - 0"
 PLAIN CONCRETE PAVT. --- 17' - 0"
 PLAIN CONCRETE BASE --- 80' - 0"

** SKEWED WHEN NOT DOWELLED



A TYPE "J" JOINT WITH THE ADDITION OF 1" PREFORMED FILLER MAY BE USED IF THE ENGINEER DETERMINES THE EXISTING DOWELS ARE ADEQUATE.

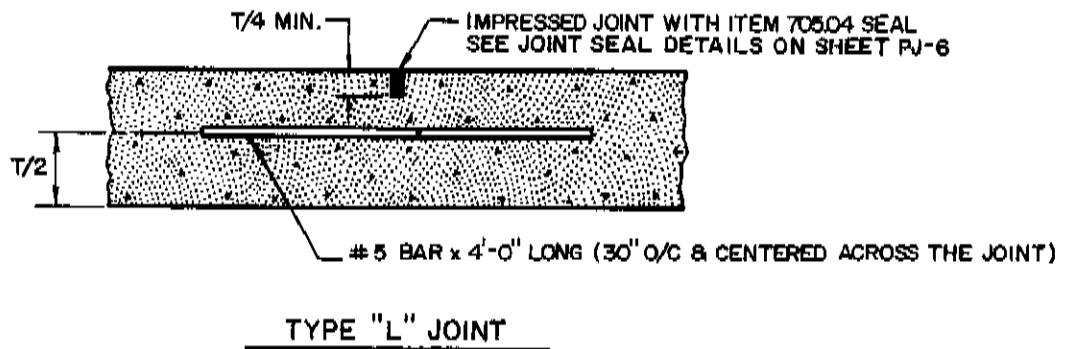
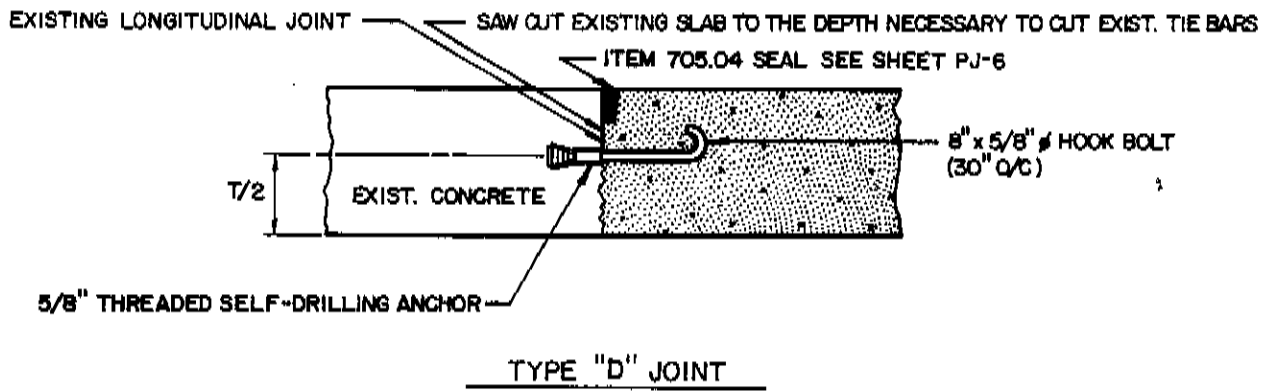
JOINT TYPE	PAGE NO.
D	PJ-2
E	PJ-7
H	PJ-3
J	PJ-4
K	PJ-6
L	PJ-2
X	PJ-5

CITY OF KENT, OHIO
 DEPARTMENT OF PUBLIC SERVICE
 ENGINEERING DIVISION

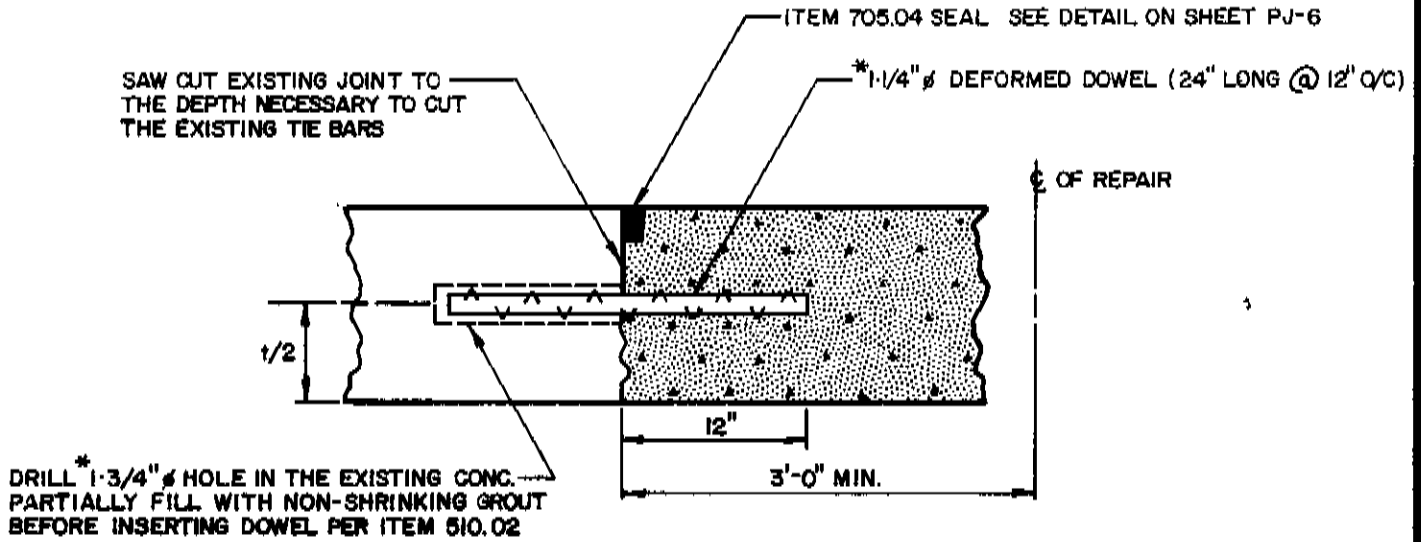
CONSTRUCTION STANDARDS

CONCRETE JOINT ARRANGEMENT PLAN

DATE 6/12/89 BY GLW NO. PJ-1
 CITY ENGINEER [Signature]



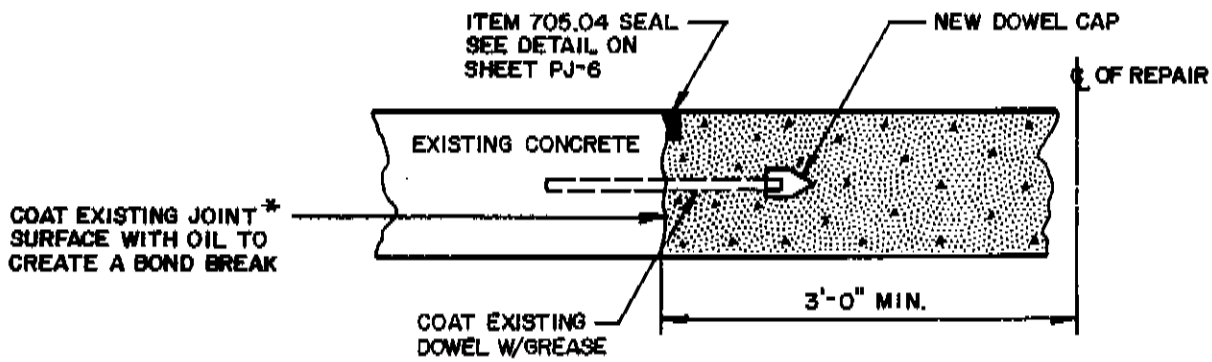
CITY OF KENT, OHIO DEPARTMENT OF PUBLIC SERVICE ENGINEERING DIVISION			
CONSTRUCTION STANDARDS			
LONGITUDINAL JOINTS			
DATE	6/12/89	BY	CLW
CITY ENGINEER			
		NO.	PJ-2



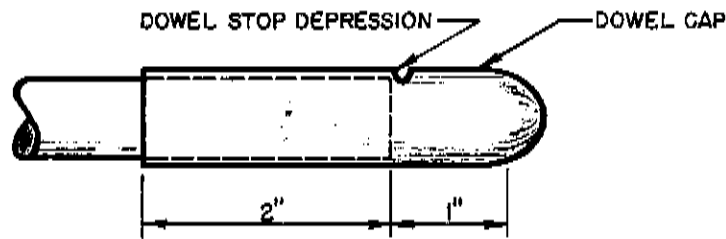
TYPE "H" JOINT

* DOWEL & HOLE SIZE		
(t) THICKNESS OF PAVEMENT	HOLE DIAMETER	DOWEL DIAMETER
Less than 8-1/2"	1-1/2"	1"
8-1/2" to 10"	1-3/4"	1-1/4"
OVER 10"	DOWEL Ø + 1/2"	1-1/4" or as shown

CITY OF KENT, OHIO			
DEPARTMENT OF PUBLIC SERVICE			
ENGINEERING DIVISION			
CONSTRUCTION STANDARDS			
TRANSVERSE JOINT			
IN EXISTING CONCRETE PAVEMENT			
DATE	6/12/89	By	C/LW NO. PJ-3
CITY ENGINEER	<i>[Signature]</i>		

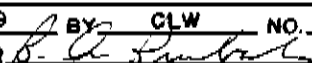


TYPE "J" JOINT



DOWEL BAR EXPANSION SLEEVE

* IF EXPANSION JOINT IS TO BE CONSTRUCTED, PREFORMED FILLER IS REQUIRED SEE SHEET PJ-7

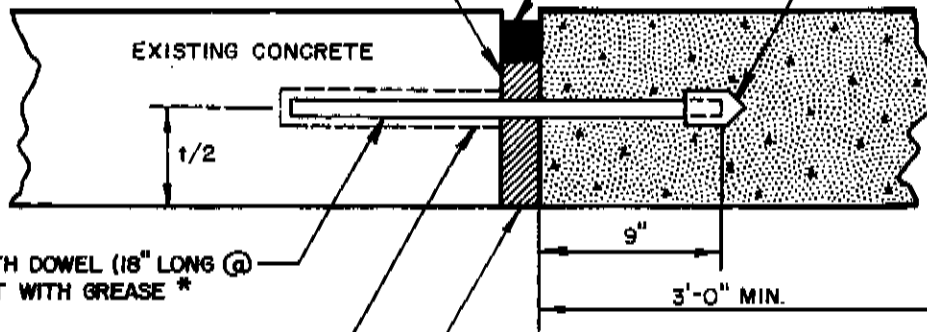
CITY OF KENT, OHIO DEPARTMENT OF PUBLIC SERVICE ENGINEERING DIVISION			
CONSTRUCTION STANDARDS			
REPAIR AT AN EXISTING TRANSVERSE DOWELLED JOINT			
DATE	6/12/89	BY	CLW
CITY ENGINEER			
		NO.	PJ-4

SAW CUT THE EXISTING JOINT TO THE DEPTH NECESSARY TO CUT THE EXISTING DOWELS †

ITEM 705.04 SEAL SEE DETAIL ON SHEET PJ-7

DOWEL CAP SEE DETAIL ON SHEET PJ-4

C OF REPAIR



1-1/4" ϕ SMOOTH DOWEL (18" LONG @ 12" O/C) COAT WITH GREASE *

DRILL 1-3/4" ϕ HOLE IN THE EXIST. CONC. PARTIALLY FILL WITH NON-SHRINKING GROUT BEFORE INSERTING GREASED DOWEL PER ITEM 510.02 *

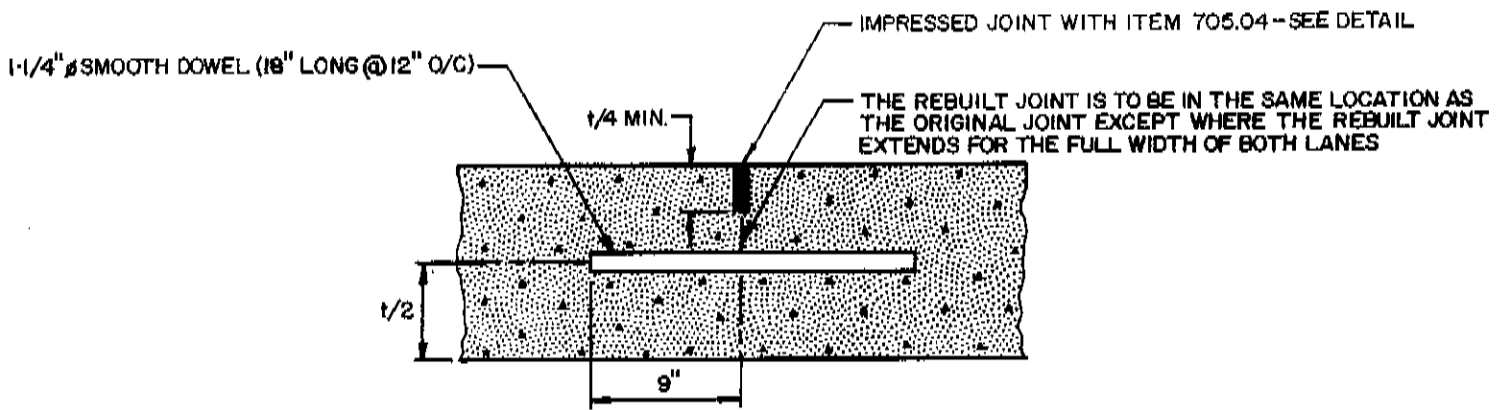
PREFORMED FILLER ITEM 705.03

TYPE "X" JOINT

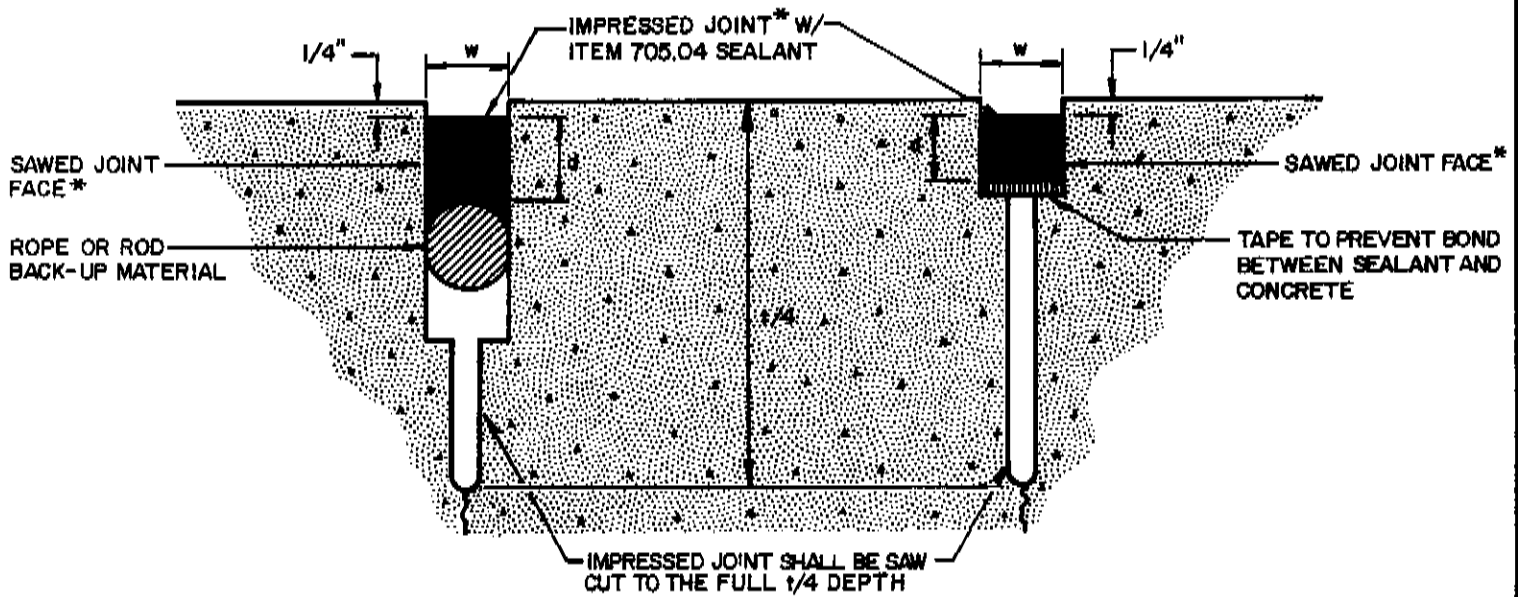
* SEE DOWEL AND HOLE SIZE TABLE ON SHEET PJ-3

† IF EXISTING DOWELS ARE TO REMAIN PROVIDE A NEW DOWEL CAP AND COAT EXISTING DOWEL WITH GREASE

CITY OF KENT, OHIO DEPARTMENT OF PUBLIC SERVICE ENGINEERING DIVISION			
CONSTRUCTION STANDARDS			
TRANSVERSE EXPANSION JOINTS IN EXISTING CONCRETE PAVEMENT			
DATE	6/12/89	BY	GLW
CITY ENGINEER	<i>B. A. Bantock</i>		
	NO.	PJ-5	



TYPE "K" JOINT



CONCRETE JOINT SEAL DETAILS

* ALL JOINTS SHALL BE IMPRESSED INTO THE CONCRETE A DEPTH OF 1-1/2" WHILE IT IS PLASTIC, AND MAINTAINED UNTIL THE CONCRETE HAS ACHIEVED AN INITIAL SET. THE JOINT SHALL BE SAW CUT AFTER THE CONCRETE IS SUFFICIENTLY HARD TO PREVENT EDGE RAVELLING TO THE FULL DEPTH EQUAL TO 1/4 THICKNESS OF THE SLAB. IN ADDITION THE SEALANT RESERVIOR SHALL BE SAW CUT TO THE DIMENSIONS AS DETERMINED FROM THE TABLE AT RIGHT. THE JOINT SHALL BE THOROUGHLY CLEANED AND FREE OF ANYTHING THAT WILL INHIBIT THE SEALANT FROM FORMING A BOND WITH THE SIDES OF THE JOINT. HOWEVER, BONDING WITH THE BOTTOM OF THE JOINT IS PROHIBITED.

POURED JOINT SEALANT DIMENSIONS		
Joint Spacing or Type, feet	Joint Width (w) inch	Sealant Depth (d) inch
15' or Less	1/4"	3/4"
20'	3/8"	3/4"
30'	1/2"	3/4"
40'	5/8"	1"
Expansion Joint	1"	1-3/4"

CITY OF KENT, OHIO
DEPARTMENT OF PUBLIC SERVICE
ENGINEERING DIVISION

CONSTRUCTION STANDARDS

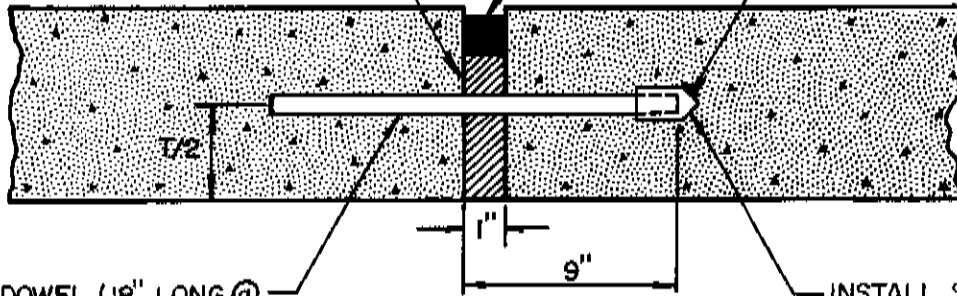
NEW TRANSVERSE JOINT

DATE 8/14/87 BY CLW NO. PJ-6
CITY ENGINEER *H. C. Bunker*

PREFORMED FILLER ITEM 705.03

ITEM 705.04 SEAL-SEE DETAIL BELOW

DOWEL CAP-SEE DETAIL SHEET PJ-4

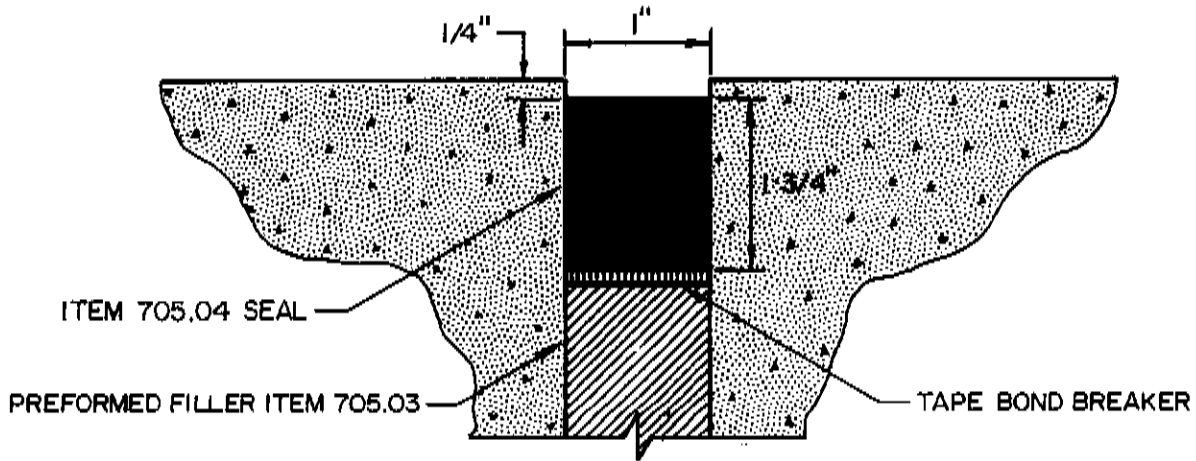


1-1/4" * ϕ SMOOTH DOWEL (18" LONG @ 12" O/C).

INSTALL SLEEVES ON OPPOSITE ENDS OF ADJACENT DOWELS.

*SEE DOWEL AND HOLE SIZE TABLE-SHEET PJ-3

TYPE "E" JOINT



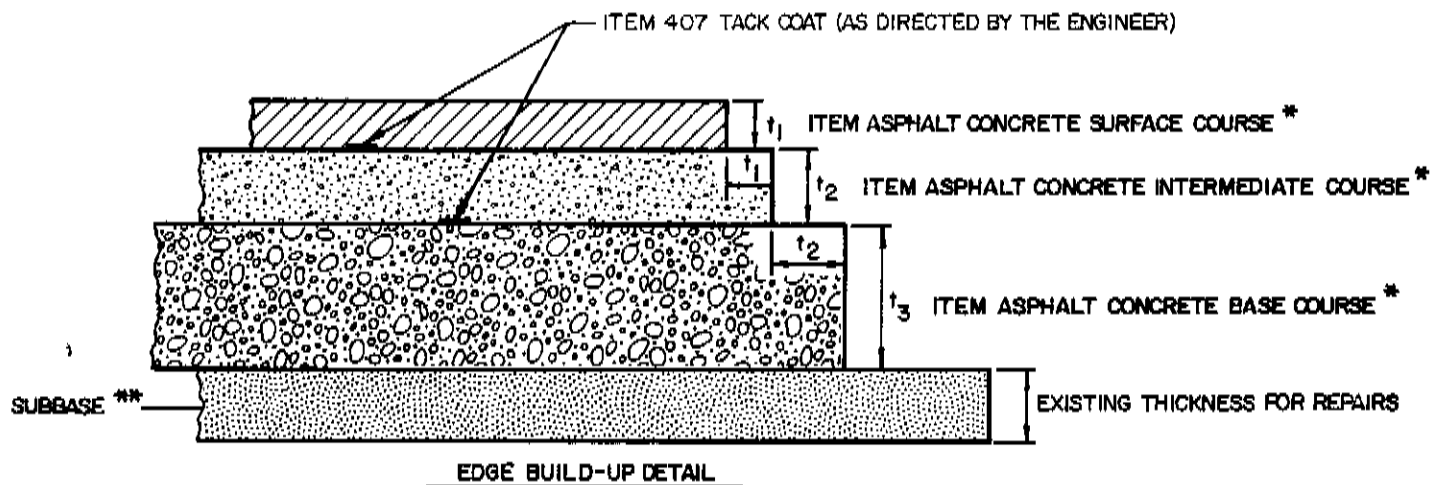
ITEM 705.04 SEAL

PREFORMED FILLER ITEM 705.03

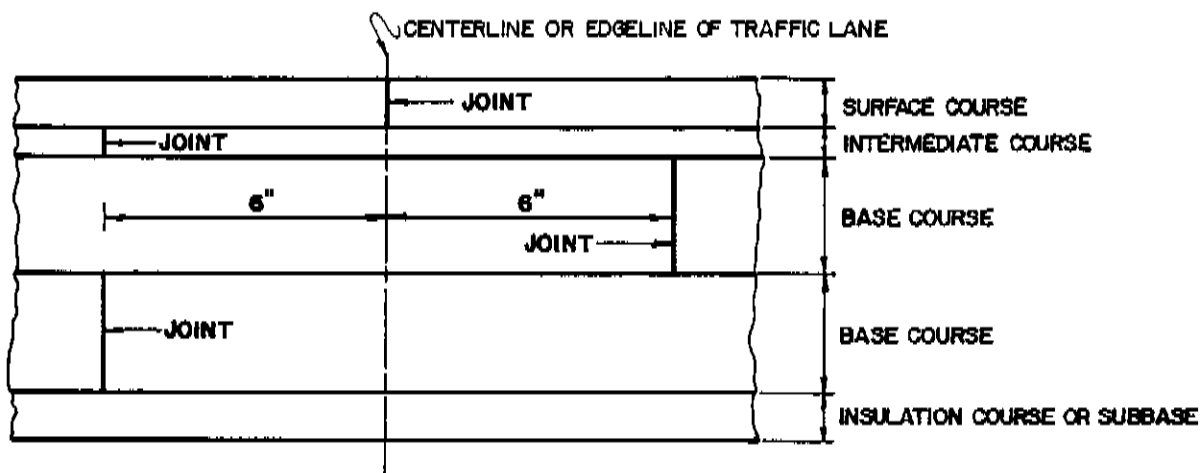
TAPE BOND BREAKER

CONCRETE EXPANSION JOINT SEAL DETAIL

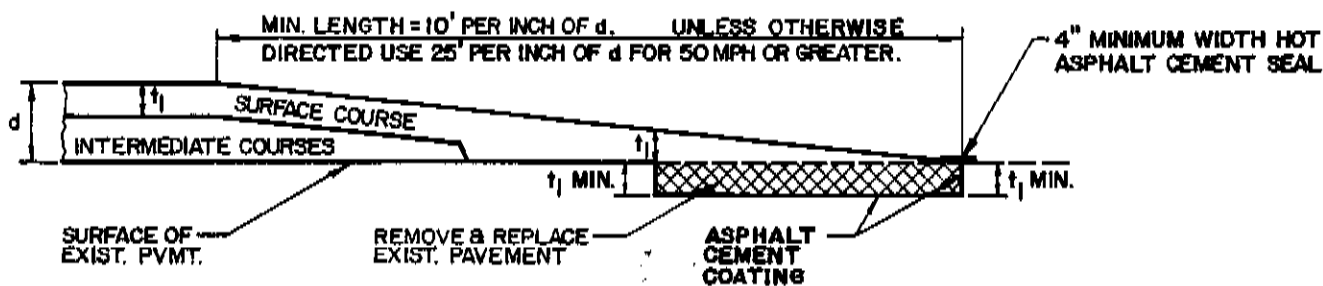
CITY OF KENT, OHIO			
DEPARTMENT OF PUBLIC SERVICE			
ENGINEERING DIVISION			
CONSTRUCTION STANDARDS			
NEW TRANSVERSE EXPANSION JOINT			
DATE	8/10/87	BY	CLW
CITY ENGINEER	<i>[Signature]</i>		NO. PJ-7



EDGE BUILD-UP DETAIL



JOINT LAP DETAIL



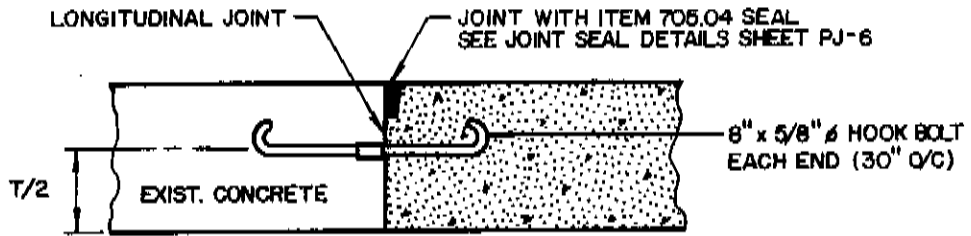
BUTT JOINT DETAIL

- t₁ THE TOTAL THICKNESS OF ITEM ASPHALT CONCRETE SURFACE COURSE SHALL NOT BE LESS THAN 1-1/4" NOR MORE THAN 2-1/2" WITH THE MAXIMUM THICKNESS PER ANY ONE COURSE AFTER COMPACTION OF 2".
- t₂ THE TOTAL THICKNESS OF ITEM ASPHALT CONCRETE INTERMEDIATE COURSE SHALL NOT BE LESS THAN 2" NOR MORE THAN 4" WITH THE MAXIMUM THICKNESS PER ANY ONE COURSE AFTER COMPACTION OF 3".
- t₃ THE TOTAL THICKNESS OF ITEM ASPHALT CONCRETE BASE COURSE SHALL NOT BE LESS THAN 3" NOR MORE THAN 12" WITH THE MAXIMUM THICKNESS PER ANY ONE COURSE AFTER COMPACTION OF 3".
- d TOTAL THICKNESS OF ALL RESURFACING COURSES.

* ASPHALT CONCRETE AND BITUMINOUS AGGREGATE BASE COURSES SHALL CONFORM TO THE CITY OF KENT STANDARD SPECIFICATIONS FOR THESE ITEMS.

** SUBBASE MATERIAL SHALL ONLY BE PROVIDED IF THE EXIST. PAVEMENT SECTION HAS A SUBBASE DRAINAGE COURSE, OR IF DIRECTED BY THE ENGINEER.

CITY OF KENT, OHIO			
DEPARTMENT OF PUBLIC SERVICE ENGINEERING DIVISION			
CONSTRUCTION STANDARDS			
FLEXIBLE PAVEMENT DETAILS			
DATE	3/6/89	BY	GLW
CITY ENGINEER			NO. PJ-8



TYPE "L" JOINT (OPTIONAL)

CITY OF KENT, OHIO DEPARTMENT OF PUBLIC SERVICE ENGINEERING DIVISION			
CONSTRUCTION STANDARDS			
LONGITUDINAL JOINTS CONT.			
DATE	1/27/89	BY	ELW NO. PJ-9
CITY ENGINEER	